

S-5!TM Unprecedented Innovation Unmatched Quality Unbelievable Price

Installation Instructions

Stop! Has your ColorGard® system been designed properly with the assistance of a distributor or the online ColorGard® calculator? If not, see our Calculator and Load Table at www.S-5.com, or ask your distributor!

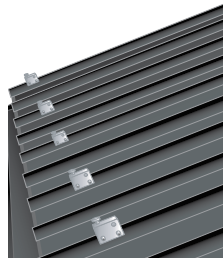
Notice to S-5!TM users: specific layout and assembly schematics for S-5! products are the responsibility of the user or project designer. Due to the many variables involved with specific panel products, climates, snow melt phenomena and job particulars, **the manufacturer cannot and does not express any opinions as to the suitability of any S-5! assembly for any specific application and assumes no liability with respect thereto.** S-5! clamps are tested for ultimate holding strength on various seam types and materials. This information is available from the S-5! website: www.S-5.com. This document is an installation guide only and the photographs and drawings herein are for the purpose of illustrating installation tools and techniques, not system designs. Clamp spacing should never exceed 32" with standard products (Contact your distributor for products to accommodate a seam spacing greater than 32").

Tools Needed

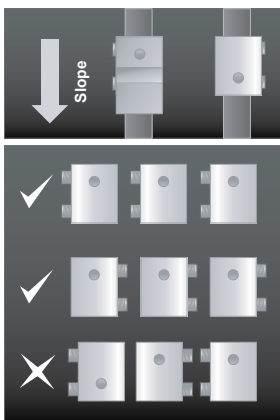
- Electric Screwgun
- Box end wrench, 1/2" drive impact wrench, or Ratchet
- Saw to cut ColorGard® crossmember
- Tin Snips
- String Line
- Torque Wrench
- Pliers or Vice Grip Pliers

1. Before You Start

First, use a string line across the top of the panel seams at the desired location to establish a true line for installation of the S-5! clamps. Individually measuring from the eave to determine each clamp location is not recommended.



2. Preparing The Clamps



If the ColorGard® assembly utilizes the VersaClipTM for attachment of the ColorGard® crossmember, the bolt hole in the clamp should be at the upslope end of the clamp. If the assembly uses punched ColorGard® without VersaClipTM the hole should be at the downslope end of the clamp.

When using the S-5-U, determine which side of the clamp to load the setscrews into, and thread the setscrews into all clamps, being careful

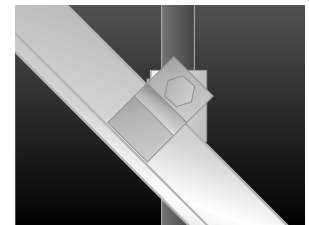
that the bolt hole will be in the correct (upslope or downslope) orientation, with the setscrews on the correct side of the seam. **Both setscrews must be on the same side of the clamp.**

3. Installing The Clamps

S-5! clamps are installed differently depending upon clamp model and seam style. Please see the installation instructions included with your clamps.

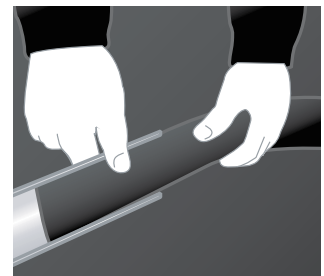
Using VersaClipTM

When seam spacing is not divisible by 4" (e.g. 12", 16", 24") or when panels are not laid up true-to-dimension, or when ColorGard® is installed askew to the panel seams (e.g. parallel with the line of a valley) the VersaClipTM facilitates installation. The VersaClipsTM are inserted into the ColorGard® prior to placement of ColorGard® on the clamps. Align clips with S-5!TM clamp. VersaClipTM can be used with punched or unpunched ColorGard®.



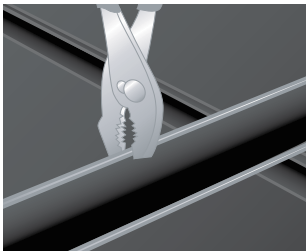
4. Installing The ColorGard®

Color strips should be sheared from the same prefinished metal as the roof panels. Shear strips to exactly 2" wide (8' or 10' long). Slide the color strip into the ColorGard® crossmember as shown (right). If the strip length is 8 feet, it may be pre-assembled into the ColorGard® crossmember.



If the strip is 10' long it will be assembled to the

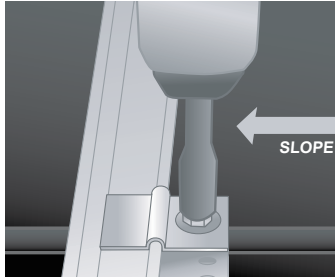
Attach anything to standing seam metal roofs without piercing the panel!



ColorGard® as installation progresses. Joints in the ColorGard® should be concealed by offsetting the joints of the color strip from the joints of the ColorGard®. The joints of the color strips can be overlapped about 1/2" if

desired. Each color strip should be secured to the ColorGard® somewhere along its length. This is done by pinching the retainer lip of the ColorGard® with an ordinary pair of pliers. It can be done at one end of the ColorGard® section or anywhere along its length to prevent lateral migration of the color strip.

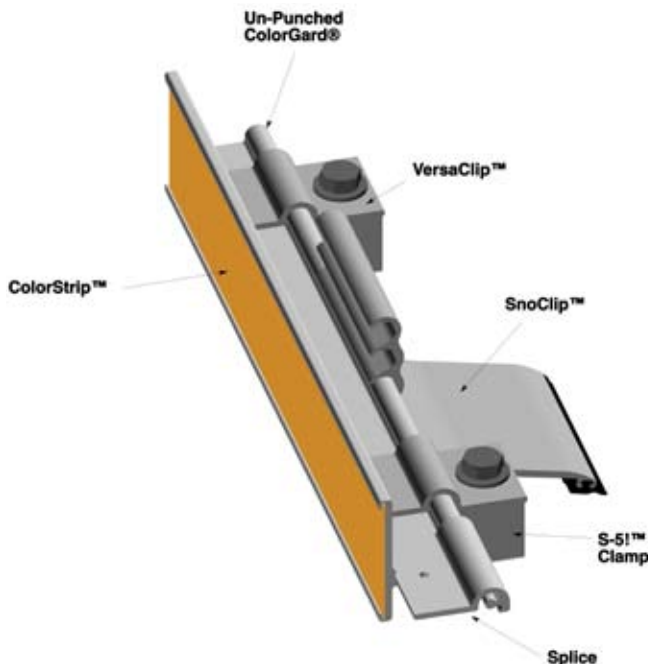
5. Bolt ColorGard® to clamps



Attach ColorGard® to clamps with stainless bolts and washers provided. Bolts can be tightened with a 9/16" (17mm) box-end wrench, or ratchet. On larger jobs a 1/2" drive electric impact will expedite this work. Tension bolts to a minimum of 20 ft. lbs. (27 Nm)

Add splice pieces at each ColorGard® joint as shown below. The "dimple" in the splice piece will automatically provide a 1/8" space between adjoining sections to allow for linear thermal expansion of the ColorGard®. Trim ColorGard® at the end of the assembly, being sure it does not cantilever more than 4" beyond clamp. Any trimmed piece of ColorGard® must be attached with at least two clamps.

ColorGard® cutting tip: If it is necessary to field cut ColorGard®, such as at the end of an assembly, it can be done with a hack saw, or electric reciprocating saw with a fine-tooth metal cutting blade. A power mitre saw with a fine tooth carbide tip blade also works well.



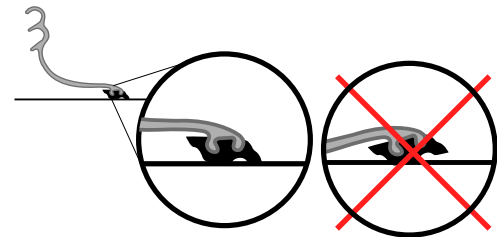
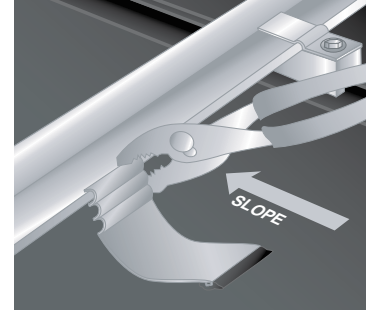
SnoClip II™



SnoClip III™

Using SnoClip™

SnoClip II™ or SnoClip III™ can be added to the assembly using a mallet, pliers, or Channel-Locks. One clip is used between seams (in rare cases two clips may be desired, see website for details). Mount the SnoClip™ to the back of the ColorGard® using the lock that results with the rubber "foot" resting properly on the panel surface. When applying downward pressure on the part, the "toe" should engage the surface of the panel just before the "heel."



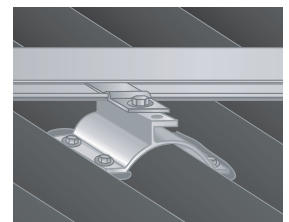
Using VersaBracket™

1. Install the bracket. See installation instructions that came with your bracket.
2. Fasten unpunched ColorGard® to the top flange of the bracket using a 1/4 - 14 self-drilling screw.



Using CorruBracket™

1. Install the bracket. See installation instructions that came with your bracket.
2. Fasten ColorGard® to the bracket in the same fashion as step 5.



These instructions for use by those experienced in the craft. Always follow appropriate safety precautions and use appropriate tools.

S-51™ Warning! Please use this product responsibly! Visit our website or contact your S-51™ distributor for detailed installation instructions and load test results.