



## Retrofit<sup>®</sup> Original





When it has to flash  
around, not over



- Fast and Efficient installation  
Wraps around existing or difficult to access pipes
- Snaps together in seconds  
The built-in crimp means no loose clips or rivets
- Grips tight and stays tight  
Made from DEKS quality polymer compound
- Our base makes easy work  
Aluminium base conforms to roof with ease
- Twenty year warranty  
Just fit it and forget it - we've got you covered



## Selection Guide

Code	Pipe Size mm	Pipe Size inches	Roof Pitch	Base mm	Colours
RF801	20-70	¾ - 2¾"	0-40° or 10/12	160mm	
RF802	50-190	2 - 7½"	0-40° or 10/12	273mm	
RF803	85-255	3¼ - 10"	0-40° or 10/12	369mm	
RFS4	235-425	9¼ - 16¾"	0-40° or 10/12	762 x 680mm	

Red Silicone  
Grey (EPDM)  
Black (EPDM)

Available in Black and Grey EPDM or Red Silicone

EPDM will withstand constant temperatures at the roofline of -50°C (-58°F) to 115°C (239°F) and up to 150°C (302°F) intermittently. Red Silicone will withstand constant temperatures at the roofline of -50°C (-58°F) to 200°C (392°F) and up to 250°C (482°F) intermittently.

Please Note That the outside temperature of the pipe may be significantly different to the exit temperature of the appliance.

## Installation Information



1

Trim cone to suit pipe size using sharp tin snips.



2

With clip in downstream position, wrap top of cone around pipe and engage metal teeth in opposing pockets starting at the top.



3

To assist locating clip into pocket, place hand behind seam. Fasten clip with pliers or multigrips, working from top to base. Do not over crimp.



4

Apply sealant to underside of Dektite® base and shape to roof by hand.



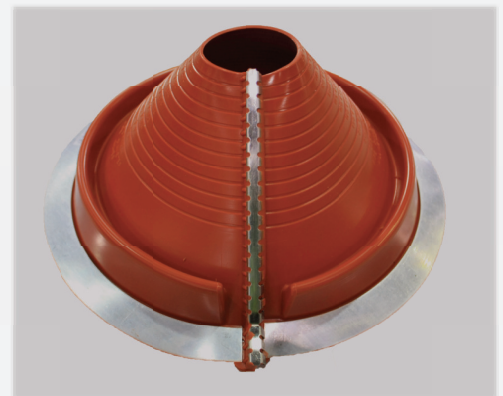
5

Fasten flashing down and secure clip by placing a fastener either side of clip first.



6

Apply sealant to top of crimp closure and any other potential leak areas.



Always use the neutral cure low modulus silicone for sealing  
In corrosive and coastal environments fix using blind aluminium rivets

**Need to flash a square penetration? Contact DEKS to discuss the square flashing range.**

